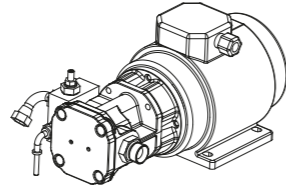


SCAMBIATORE

Consigliato per edifici pubblici, ospedali, impianti ad alta affluenza, l'utilizzo garantisce il funzionamento ottimale del Vostro ascensore in condizioni di traffico elevato. Disponibile per tutti i modelli di centraline Lift.

HEAT EXCHANGER

Recommended for public buildings, hospitals, high-traffic facilities, the use guarantees optimum operation of your lift in high traffic conditions. Available for all models of hydraulic power units.

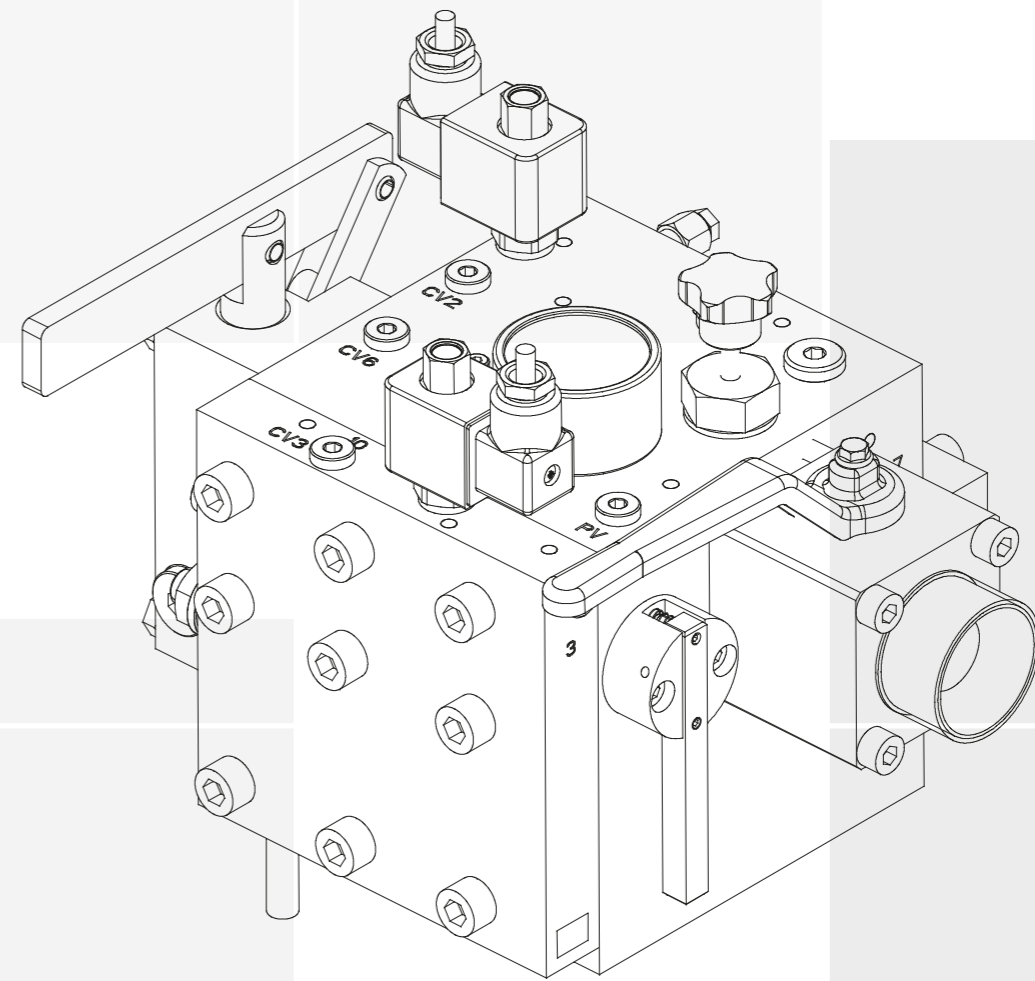


POMPA DI MICROLIVELLAMENTO

Consigliata per impianti montacarichi, montauto, elevata portata, garantisce il mantenimento del livello cabina al piano aumentando la sicurezza delle operazioni di carico e scarico. La potenza (2,2 kW) del motore ausiliario riduce il consumo elettrico e l'usura del gruppo motore/pompa principale.

MICRO LEVELLING PUMP

Recommended for lifts, car lifts systems, high flow, ensures the maintenance of the car at the floor level by increasing the safe loading and unloading operations. The power (2.2 kW) of the auxiliary motor reduces power consumption and engine wear group / main pump.



TUBO FLESSIBILE

Disponibile nelle versioni da 3/4" a 2", con lunghezze variabili di metro in metro, fornito con relativa scheda di collaudo.

HOSE FLEX

Available from 3/4 "to 2" in varying, lengths meter by meter, supplied with the test report.



TUBO RIGIDO

Disponibile in barre da 6 m, complete di raccorderia dritte o a 90°, con diametri da 35x2,5 mm e 42x3 mm.

STEEL PIPE

Available in bars of 6m, complete with straight fittings or at 90°, with diameters from 35x2,5 mm and 42x3 mm.



OLIO

A completamento della fornitura, olio a base minerale severamente raffinato HL46 in fusti da 20 l cad.uno, viscosità VG46 @ 40°C, infiammabilità V.A. 220 °C, punto di scorrimento -21 °C.

OIL

On completion of the supply, severely refined mineral base oil HL46 in tanks 20 l, viscosity VG46 @ 40°C, Flash V.A. 220° C, pour point -21° C.



DISPOSITIVI PER EMENDAMENTO A3

Kit di protezione contro i movimenti incontrollati degli ascensori idraulici, disponibile nelle versione HSV 150 o 440 Monosolenoid (Es. 48V) o Bisolenoid (Es. 48/12V).

DEVICE FOR A3 AMENDMENT

Kits for protection against uncontrolled movements of the hydraulic lifts, Available in 150 or 440 version Monosolenoid (Ex. 48v) or Bisolenoid (Ex. 48V/12V).

CENTRALINE POWER UNITS

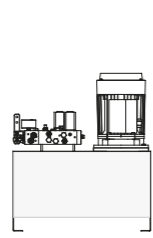
HYDRONIC LIFT

via per Cadrezzate, 21/C4, 21020 Brebbia (VA)
tel. +39 0332773134 fax +39 0332773157

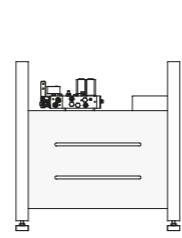
www.hydroniclift.it
hydronic@hydroniclift.it



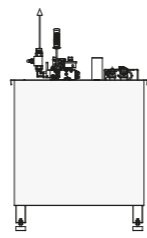
MHY 2 / MHY 4



MHY 3



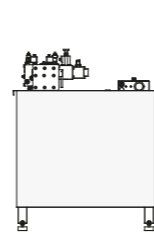
MHY 7.5



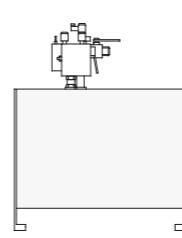
HL-TOWER



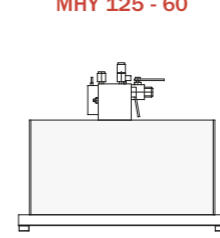
MHY 8.0



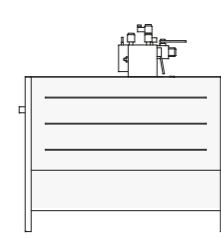
MHY 8



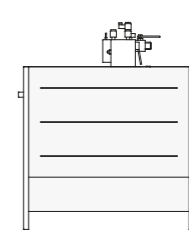
MHY 125 - 50
MHY 125 - 60



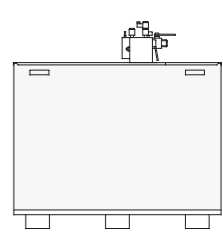
MHY 15



MHY 25



MHY 37



DESTINAZIONE D'USO EQUIPMENT CATEGORY	HOME LIFT	HOME LIFT	HOME LIFT	HOME LIFT	STANDARD LIFT	RESIDENTIAL STANDARD LIFT	RESIDENTIAL STANDARD LIFT	STANDARD LIFT MONTACARICHI GOODS LIFT	STANDARD LIFT MONTACARICHI GOODS LIFT	STANDARD LIFT MONTACARICHI GOODS LIFT
TIPO VALVOLA DISTRIBUTOR TYPE	Mechanical, single and double speed - H2S	Mechanical, single and double speed - H2S	Mechanical, single and double speed - H2S	Double speed - H2S	H300 Or Blain I-Valve	H300 Or Blain I-Valve / LRV	H300 Or Blain I-Valve / LRV	H300 Or Blain I-Valve / LRV	H300 Or Blain I-Valve / LRV	H300 Or Blain I-Valve / LRV
DIMENSIONI (mm) DIMENSIONS (mm)	MHY 2 500x260x575 (mm) MHY 4 600x300x640 (mm)	670x265x690 (mm)	717x320x1057 (mm)	260x230x1295 (mm)	817x320x1020 (mm)	850x324x1025(mm)(mm)	MHY 125 - 50 950X325X760 (mm) MHY 125 - 60 950X325X795 (mm)	1065X460X1040 (mm)	1065X555X1290 (mm)	1316X620X1380 (mm)
CAPIENZA (l) OIL CAPACITY (l)	MHY 2 Utile/working = 19 Minimo/minimum = 8 MHY 4 Utile/working = 38 Minimo/minimum = 4	Utile/working = 40 Minimo/minimum = 9	Utile/working = 70 Minimo/minimum = 45	Utile/working = 40 Minimo/minimum = 5	Utile/working = 85 Minimo/minimum = 50	Utile/working = 80 Minimo/minimum = 55	MHY125 - 50 Utile/working = 50 Minimo/minimum = 55 MHY 125 - 60 Utile/working = 60 Minimo/minimum = 55	Utile/working = 150 Minimo/minimum = 80	Utile/working = 240 Minimo/minimum = 100	Utile/working = 370 Minimo/minimum = 280
PRESSIONI UTILIZZO (bar) OPERATING PRESSURES (bar)	H2S 12/45 Blain 5/60	H2S 12/45 Blain 5/60	Min. = 12 Max. = 45	Min. = 12 Max. = 45	Mechanical 12/50 Electronic 12/60 Blain 5/60	Mechanical 12/50 Electronic 12/60 Blain 5/60	Mechanical 12/50 Electronic 12/60 Blain 5/60	Mechanical 12/50 Electronic 12/60 Blain 5/60	Mechanical 12/50 Electronic 12/60 Blain 5/60	Mechanical 12/50 Electronic 12/60 Blain 5/60
PORTATA POMPA (l/min) NOMINAL PUMP OIL FLOW (l/min)	8 - 35	8 - 30	18 - 30	8 - 30	MechanicalL 18/150	MechanicalL 35/250 Electronic 35/250	MechanicalL 35/250 Electronic 35/250	MechanicalL 50/250 Electronic 50/380	MechanicalL 210/250 Electronic 50/500	MechanicalL 210/650 Electronic 50/1000
POTENZA MOTORE (kW/HP) MOTOR POWER (kW/HP)	0,75/(1) to 3/(4)	0,75/(1) to 3/(4)	1,5/(2) to 4,5/(6)	0,75/(1) to 3/(4)	2(2,7) to 16(22)	3,3 (2,2) to16 (22)	3,3 (2,2) to16 (22)	4,4 (6) to29 (38)	4,4 (6) to 29 (80)	4,4 (6) to 29 (80)
VASCA SUPPLEMENTARE RACCOLTA OLIO (mm) AUXILIARY TANK AGAINST OIL SPILLS (EN81-20/50)	Disponibile su richiesta Available on requested	Disponibile su richiesta Available on requested	Disponibile come opzione a richiesta (integrata nell'armadio) Available as a required option (combined with the Cabinet)	Non disponibile Not available	880x365x625	864x340x520	Disponibile su richiesta Available on requested	Disponibile su richiesta Available on requested	Disponibile su richiesta Available on requested	Disponibile su richiesta Available on requested
ARMADIO L.M. MACHINEROOM CABINET	700x400x1620	700x400x1620	800x400x2100	Non disponibile Not available	950x405x2099	950x400x2100	950x400x2100	1200x570x2100	Non disponibile Not available	Non disponibile Not available
CARATTERISTICHE MAIN ADVANTAGES	Alte pressioni, dimensioni compatte, confortevole High pressure, compact dimension comfortable ride	Elevata silenziosità confortevole Low noise reduction comfortable ride	Compatta Silenziosa Silent Compact dimensions	Silenziosa Confortevole Dimensioni compatte Maximum noise reduction Smooth ride Compact dimensions	Compatta Silenziosa Silent Compact dimensions	Compatta stabile regolazioni alte pressioni silenziosa confort costante al cambiare della temperatura e pressione Compact dimension high pressure silent stable comfort upon temperature and pressure changes	Posizionabile nella fossa standard Comandi di emergenza remotati Positioned in the pit Remoted emergency controls	Dimensioni compatte alte pressioni confort costante al cambiare della temperatura e delle pressioni Compact dimension high pressure stable comfort upon temperature and pressure changes	Impianti ad alta portata e lunghe corse High capacity long-travel elevators	Impianti ad alta portata e lunghe corse Realizzazioni speciali High capacity long-travel elevators Special equipments